

Stato attuale

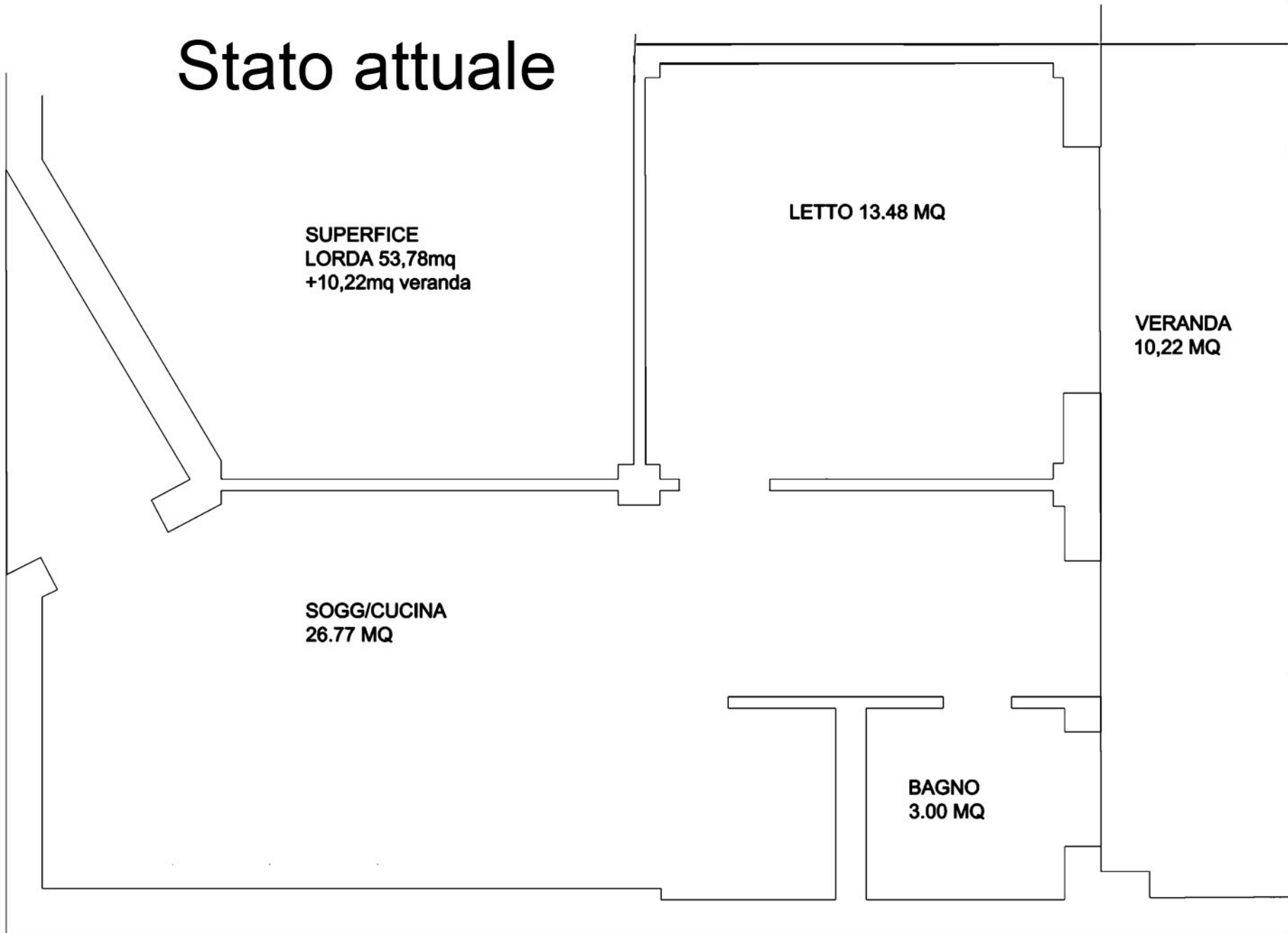
**SUPERFICE
LORDA 53,78mq
+10,22mq veranda**

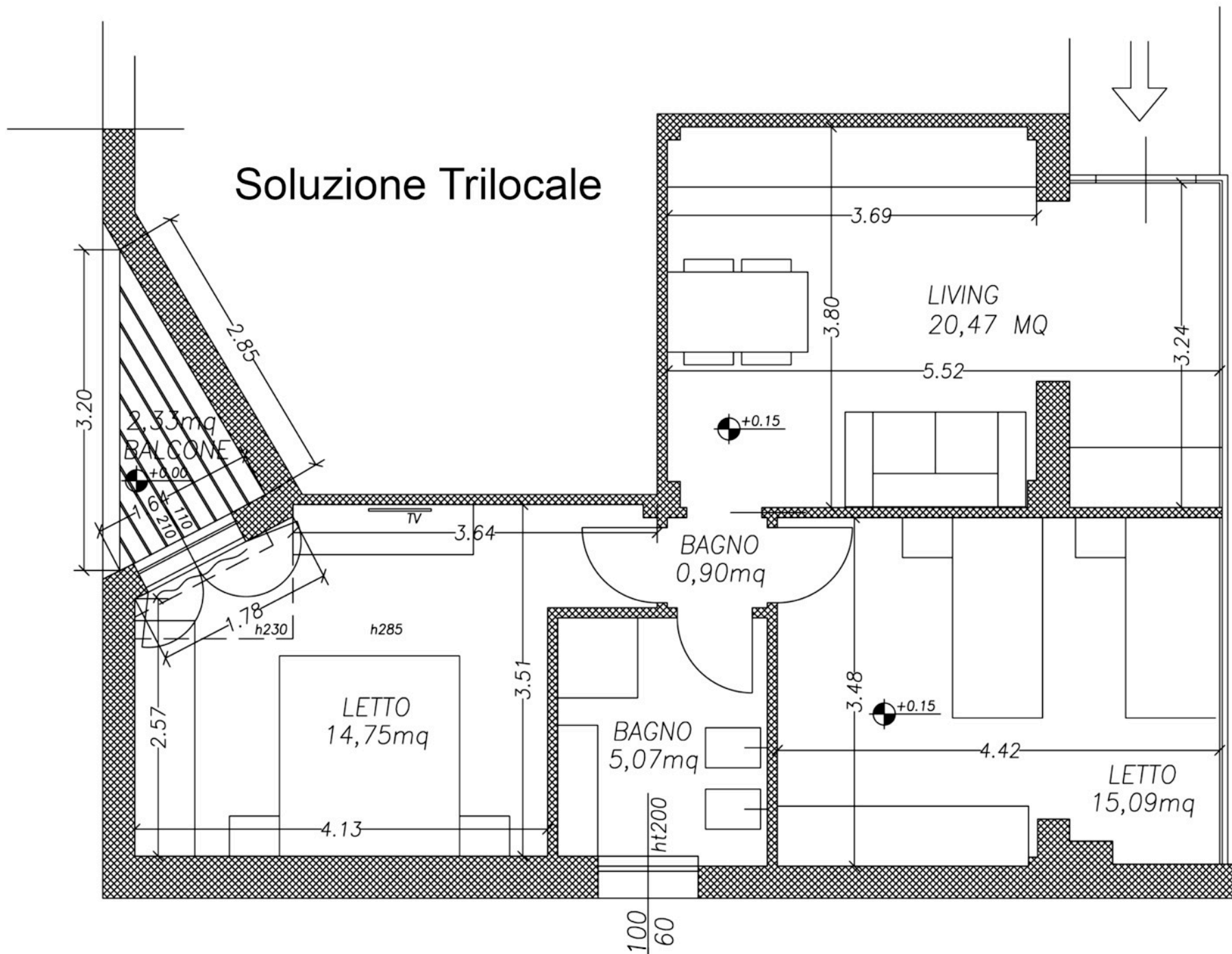
LETTO 13.48 MQ

**VERANDA
10,22 MQ**

**SOGG/CUCINA
26.77 MQ**

**BAGNO
3.00 MQ**





PROGETTO DI RISTRUTTURAZIONE

Scala 1:50